

Sergey

From: "Sergey" <tarassov@rogers.com>
To: <timingsolution@yahoo.com>
Sent: Wednesday, December 13, 2006 12:49 PM
Subject: [timingsolution] Composite

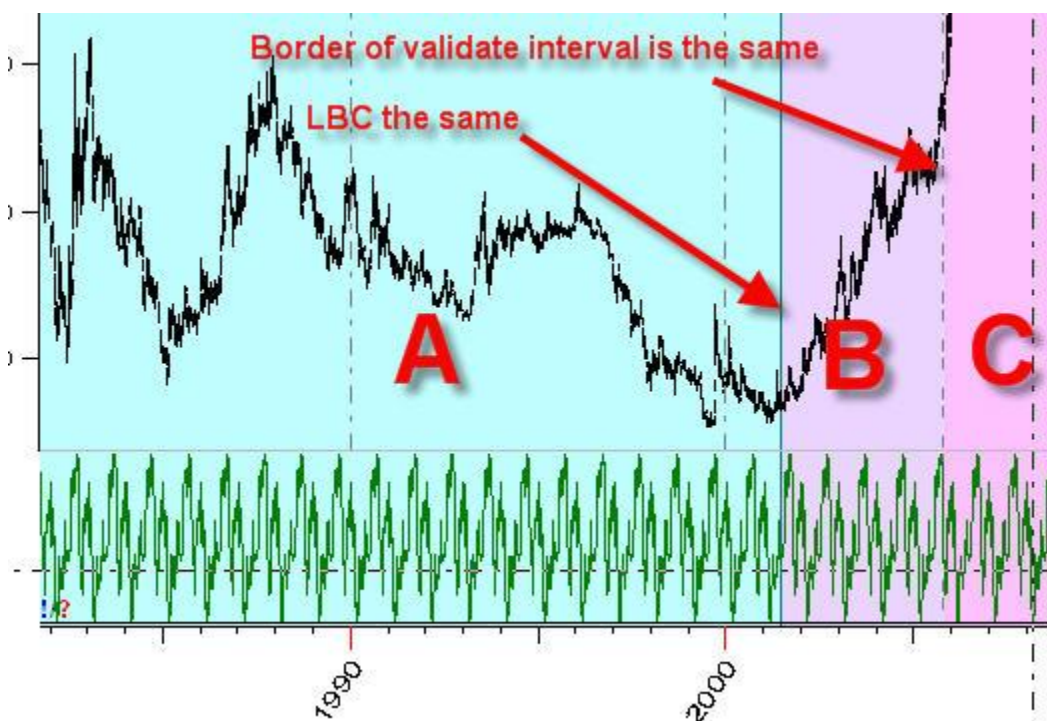
Hello, Group

I have received a question how to replicate the results when you use the Autoselection button in Composite Window.

The problem is that this button automatically selects cycles itself. When you add new price data, the selection of cycles will be different from the original.

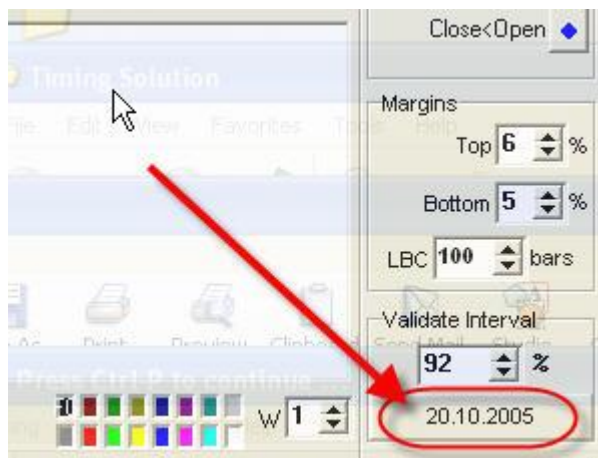
To avoid this thing, you should use one more interval, it is called Validate interval (see the explanation here, on Yahoo group, a day ago).

Please look at this diagram. You see here all three intervals - training, testing and validating. To replicate your results, the intervals A (training) and B (validating) should be the same.



In other words, you should do the following:

- 1) set the same position of LBC;
- 2) set the same border of validating interval. It is easily to do with the latest Beta version: the program shows now the date of the border of the validating interval:



Adjust the % of the validating interval till the marked dates will be the same (approximately).

Best regards,

Sergey

—·—·—·—

SPONSORED LINKS

[Software solution](#)

[Small business
finance](#)

[Business finance
online](#)

[Business finance
training](#)

[Business finance
course](#)

Your email settings: Individual Email|Traditional

[Change settings via the Web](#) (Yahoo! ID required)

Change settings via email: [Switch delivery to Daily Digest](#) | [Switch to Fully Featured](#)
[Visit Your Group](#) | [Yahoo! Groups Terms of Use](#) | [Unsubscribe](#)

—·—·—·—